

ANAMAR RESIDENTIAL

VILLA BLUE

Large modern villa with beautiful views, located in the Anamar Residential. This model allows possibility of building basement, for those who wish it.

Villa Blue is distributed in one floor. Three spacious bedrooms, one of them suite, two bathrooms and bright living – dining room with large windows and direct access to the pool and garden.

The design of this model is really unique and breaks all aesthetics of it's surroundings.

-  **3 BEDROOM**
-  **2 BATHROOM**
-  **PRIVATE PARKING**
-  **300.13 M2**
-  **PLOT 465 - 645 M2**
-  **SWIMMING POOL**
-  **SOLARIUM**



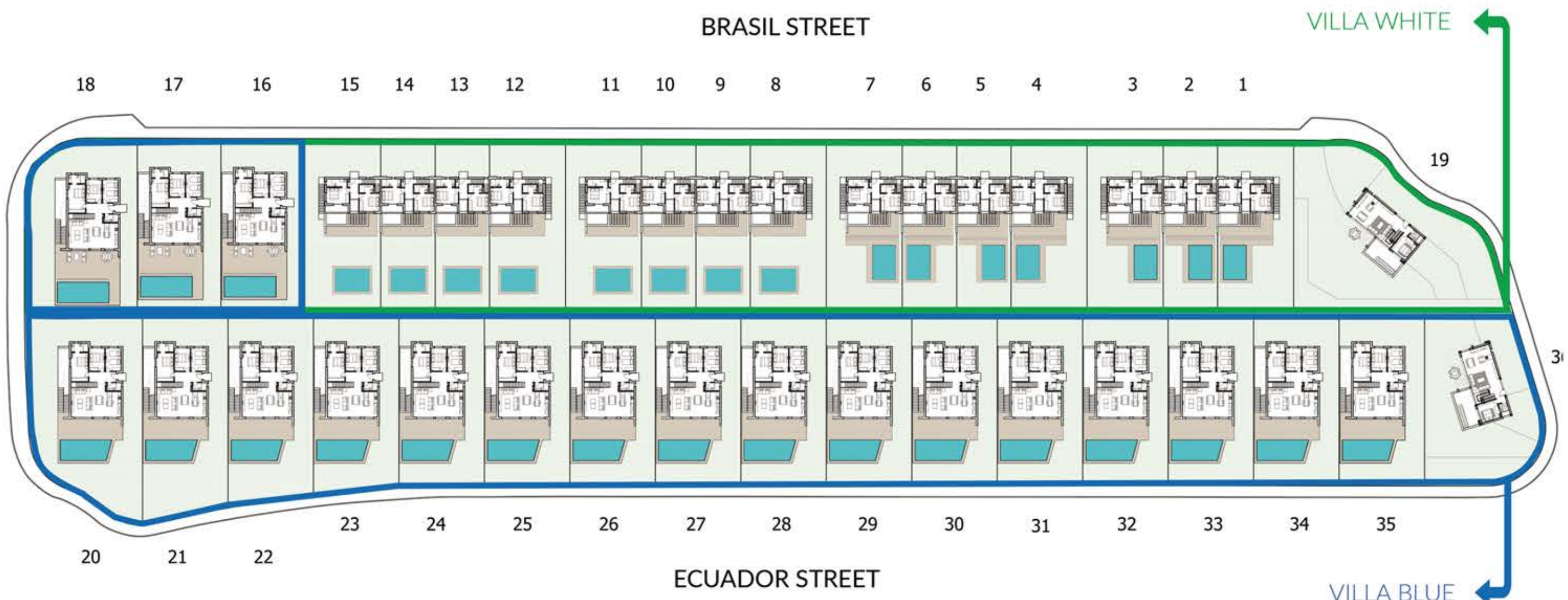
ANAMAR RESIDENTIAL

Our residential Anamar is developed by detached and semi-detached luxury villas.

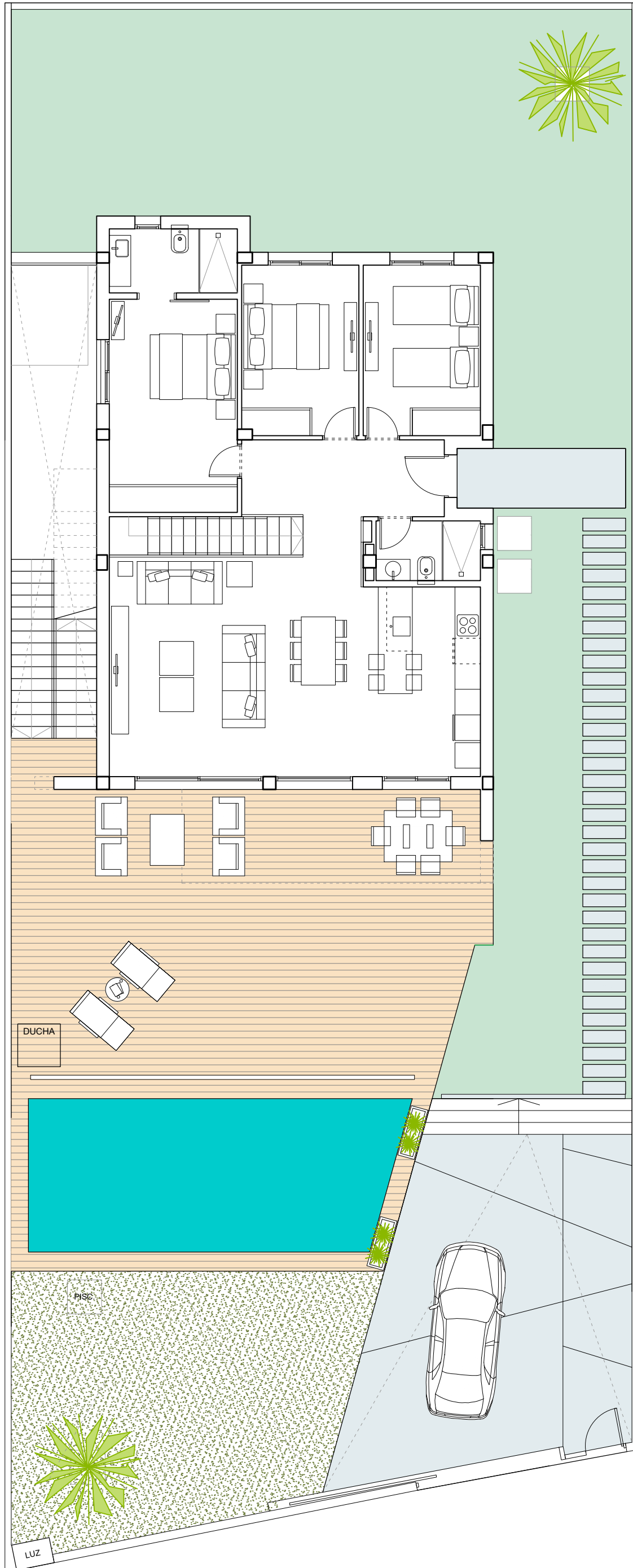
All of them have contemporary design, private pool, garden, private parking, beautiful open sea views to the sea and Benidorm.

The architectural design of our properties offers an open and bright space with many possibilities for decoration, to enjoy of the rest that is offered by one of the most privileged areas of Costa Blanca.

RESIDENTIAL LOCATION PLAN



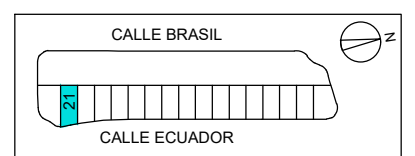
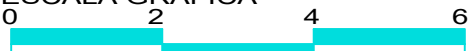
**ANAMAR-BLUE
VIVIENDA 21
25-01-2020
TERRAZA
AMPLIADA**



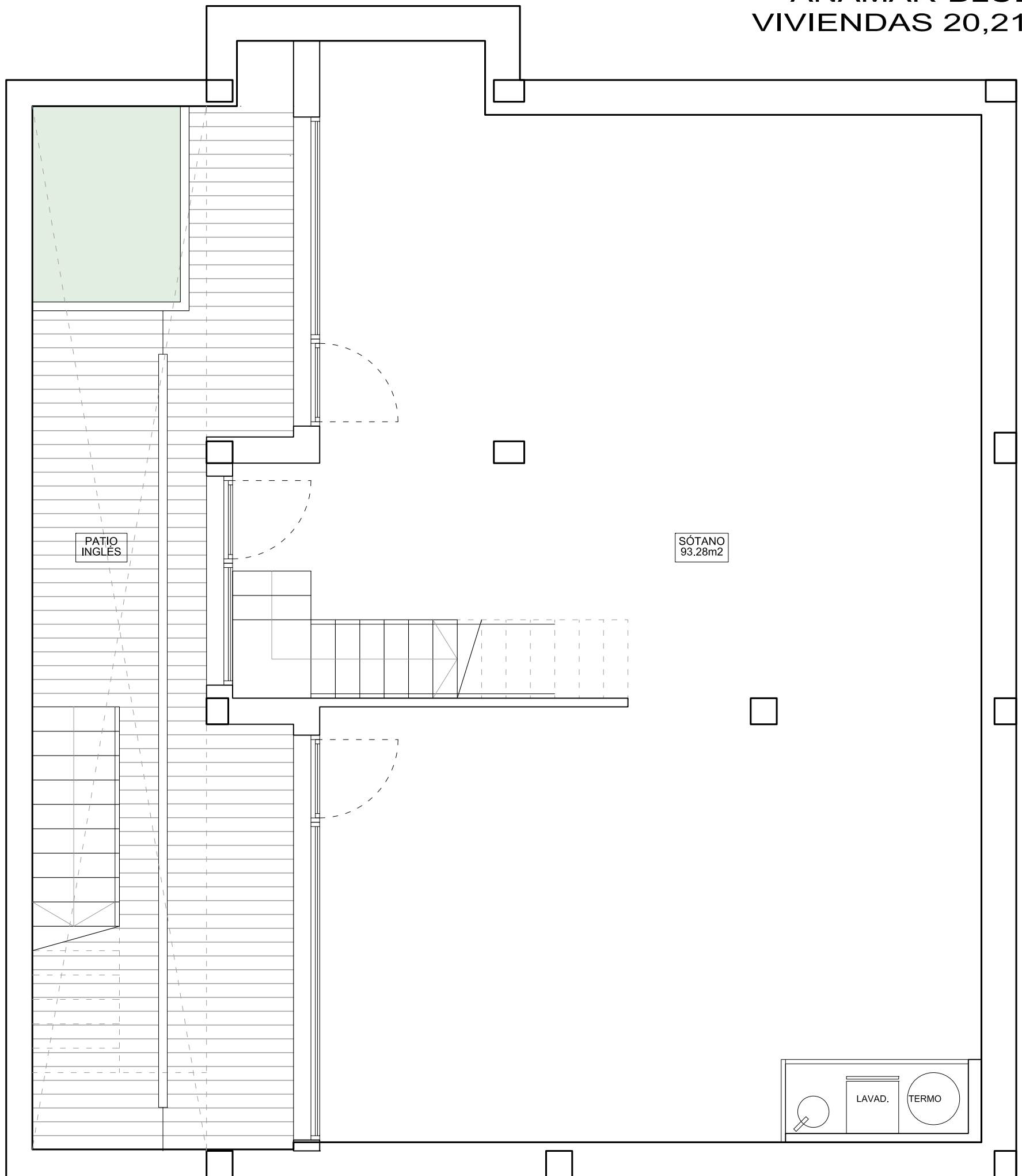
**PLANTA
ACCESO**

PARCELA APROX. 525 m2

ESCALA GRÁFICA



**ANAMAR-BLUE
VIVIENDAS 20,21,22**

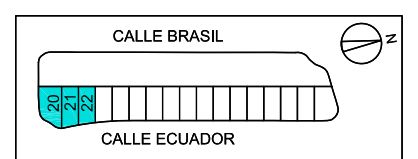


PLANTA SÓTANO

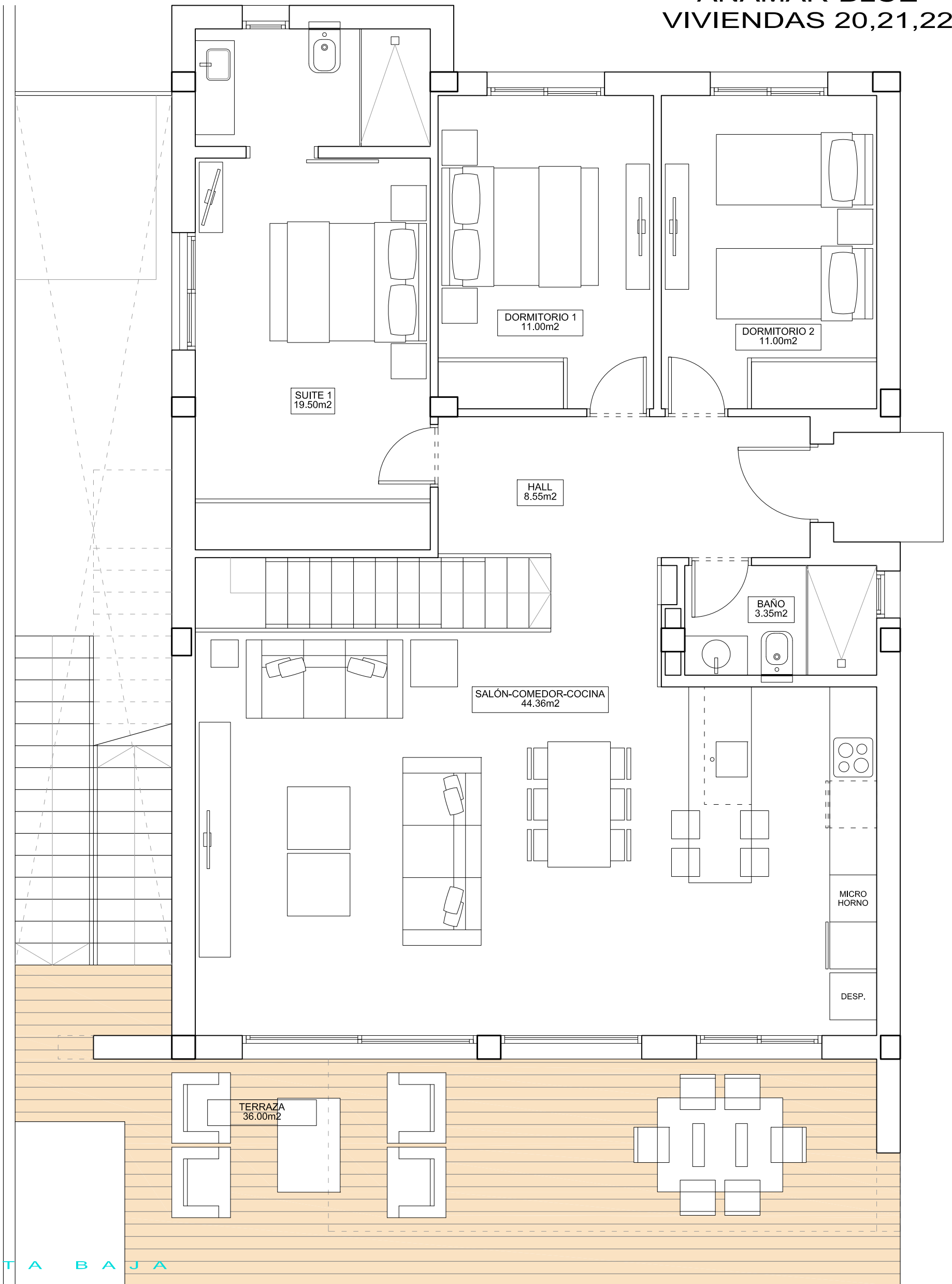
PLANTA BAJA:			
VIVIENDA CERRADA	114.95 m ²	SUP. APROX. PISCINA	30.60 m ²
TERRAZA Y ACCESO	36.00 m ²	PARCELA APROX.	según plano parcela
TOTAL PLANTA BAJA	150.95 m ²	SUP. SOLARIUM, APROX.	108,90 m ²

PLANTA SÓTANO:	
SÓTANO	110.92 m ²
PATIO	38.26 m ²
TOTAL PLANTA SÓTANO	149.18 m ²

TOTAL	300.13 m²
--------------	-----------------------------



**ANAMAR-BLUE
VIVIENDAS 20,21,22**



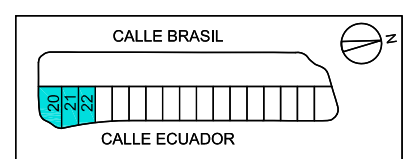
PLANTA BAJA

PLANTA BAJA:	
VIVIENDA CERRADA	114.95 m ²
TERRAZA Y ACCESO	36.00 m ²
TOTAL PLANTA BAJA	150.95 m ²

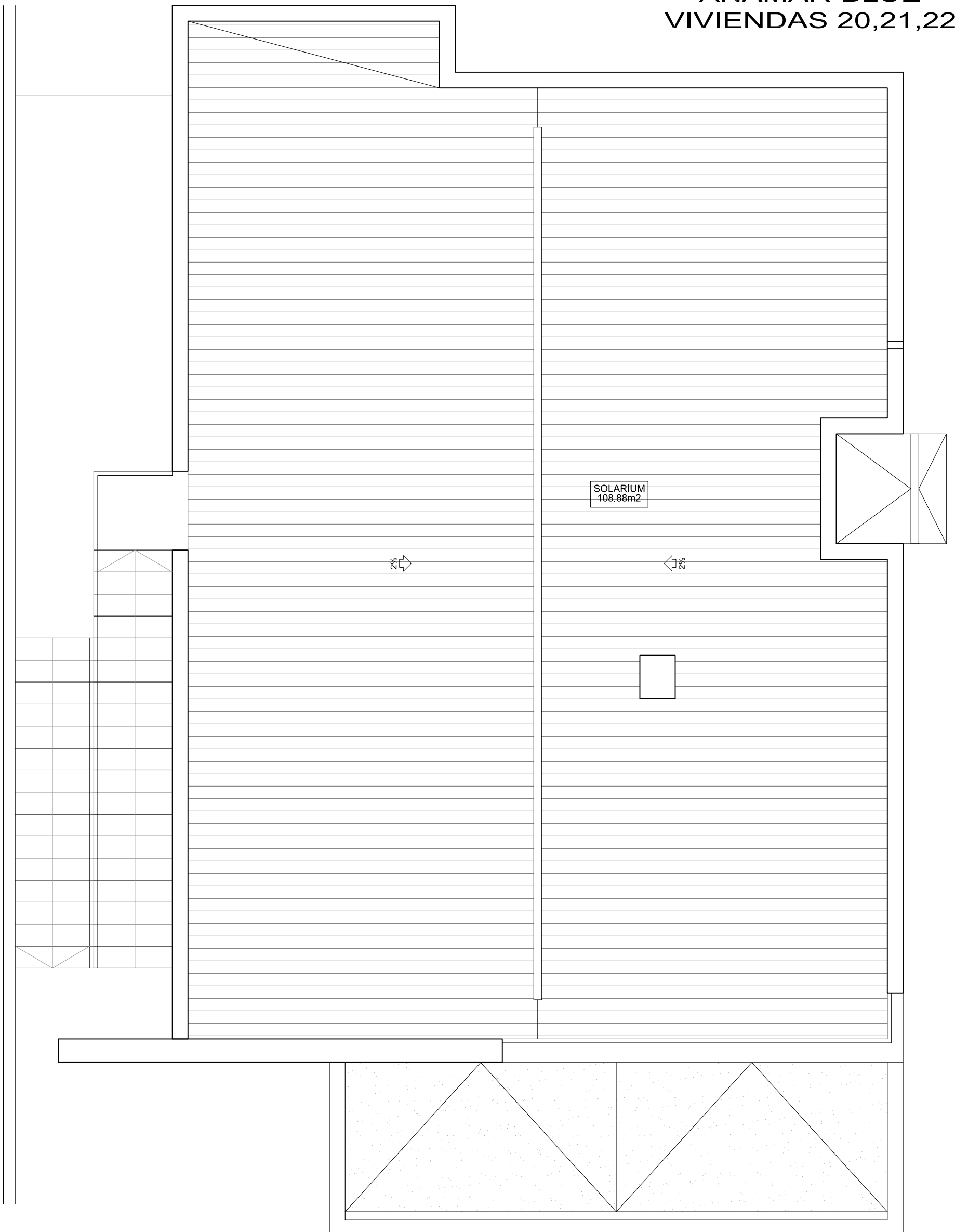
PLANTA SÓTANO:	
SÓTANO	110.92 m ²
PATIO	38.26 m ²
TOTAL PLANTA SÓTANO	149.18 m ²

TOTAL	300.13 m²
--------------	-----------------------------

SUP. APROX. PISCINA	30.60 m ²
PARCELA APROX.	según plano parcela
SUP. SOLARIUM, APROX.	108,90 m ²



**ANAMAR-BLUE
VIVIENDAS 20,21,22**



PLANTA SOLÁRIUM

PLANTA BAJA:	
VIVIENDA CERRADA	114.95 m2
TERRAZA Y ACCESO	36.00 m2
TOTAL PLANTA BAJA	150.95 m2

SUP. APROX. PISCINA	30.60 m2
PARCELA APROX. según plano parcela	
SUP. SOLARIUM, APROX.	108,90 m2

PLANTA SÓTANO:	
SÓTANO	110.92 m2
PATIO	38.26 m2
TOTAL PLANTA SÓTANO	149.18 m2

TOTAL	300.13 m2
--------------	------------------

