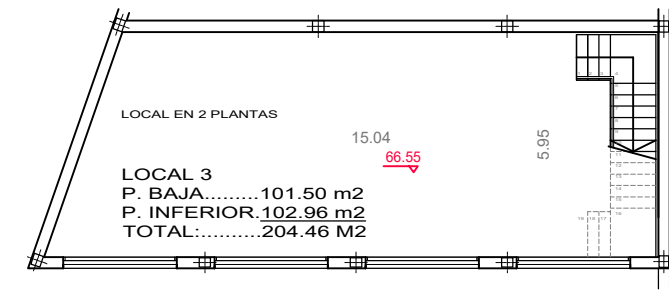
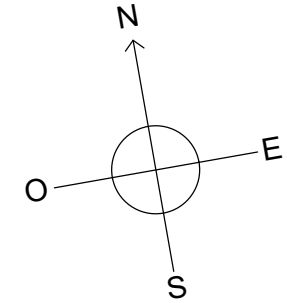
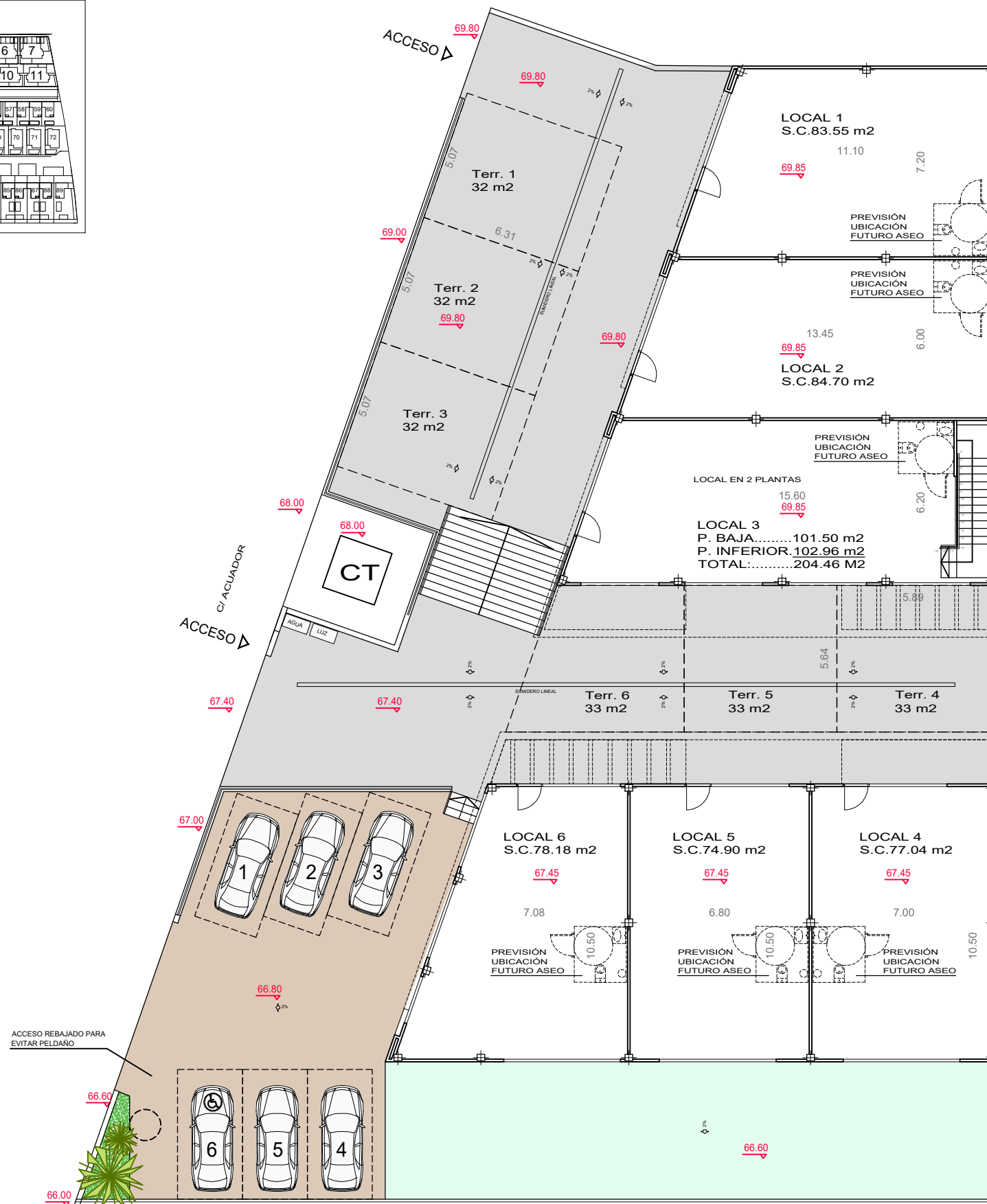
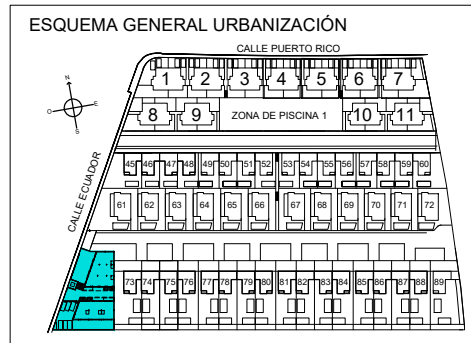


RESIDENCIAL CAMPANA BAY
LOCALES COMERCIALES

24-02-2023



Planta inferior del local 3 67.40

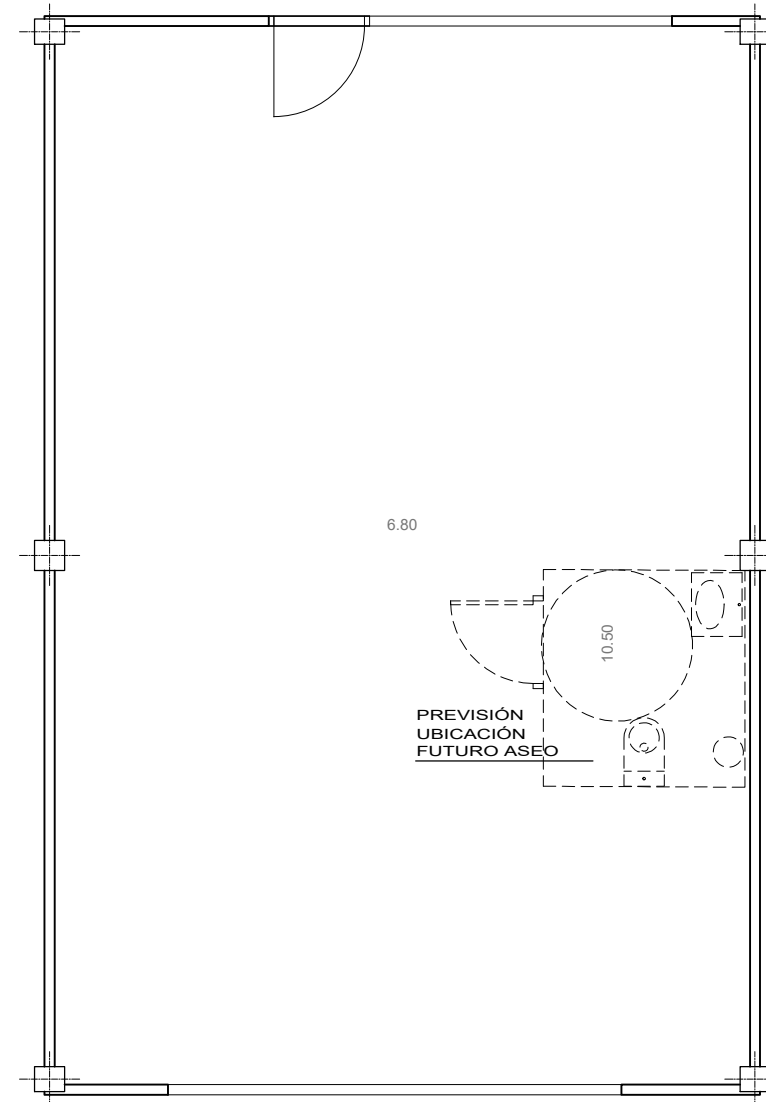
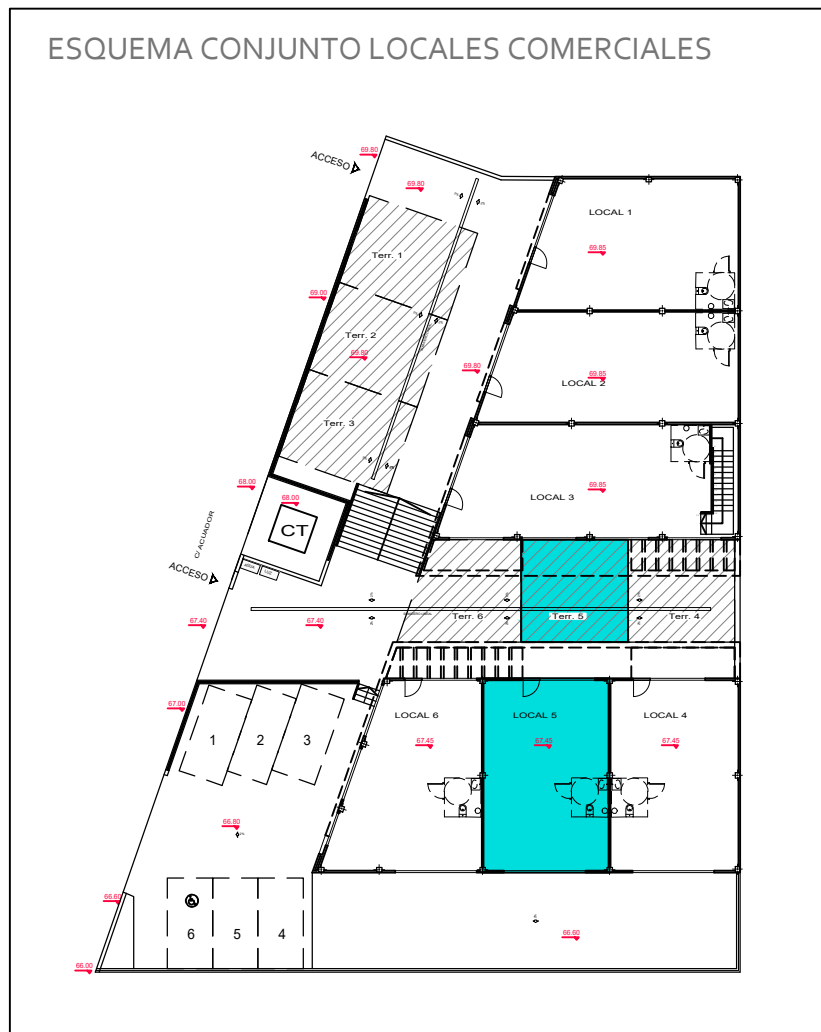
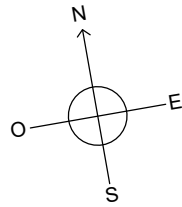
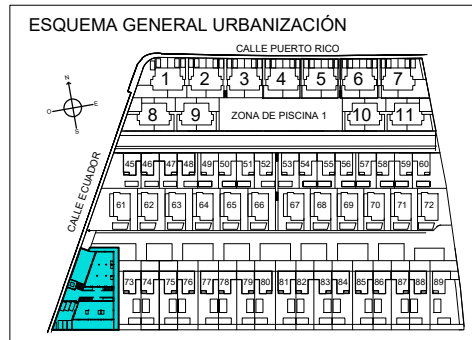
| ACABADO DE PAVIMENTOS | |
|-----------------------|---|
| | PAVIMENTO EXTERIOR DE CÉSPED ARTIFICIAL |
| | PAVIMENTO TERRAZA DE PLANTA BAJA SEGÚN LA MEMORIA DE CALIDADES. |
| | ZONA APARCAMIENTO |
| | ZONA AJARDINADA ACABADO CON GRAVA BLANCA. |
| | PALMERA SOBRE JARDINERA DE SUPERFICIE |



TODOS LOS DETALLES QUE FIGURAN EN EL PLANO SON ORIENTATIVOS
COTAS Y SUPERFICIES APROXIMADAS TOMADAS DEL PROYECTO BÁSICO QUE PODRÍAN VERSE LIGERAMENTE ALTERADAS DURANTE LA EJECUCIÓN DE LAS OBRAS

RESIDENCIAL CAMPANA BAY
LOCALES COMERCIALES

24-02-2023



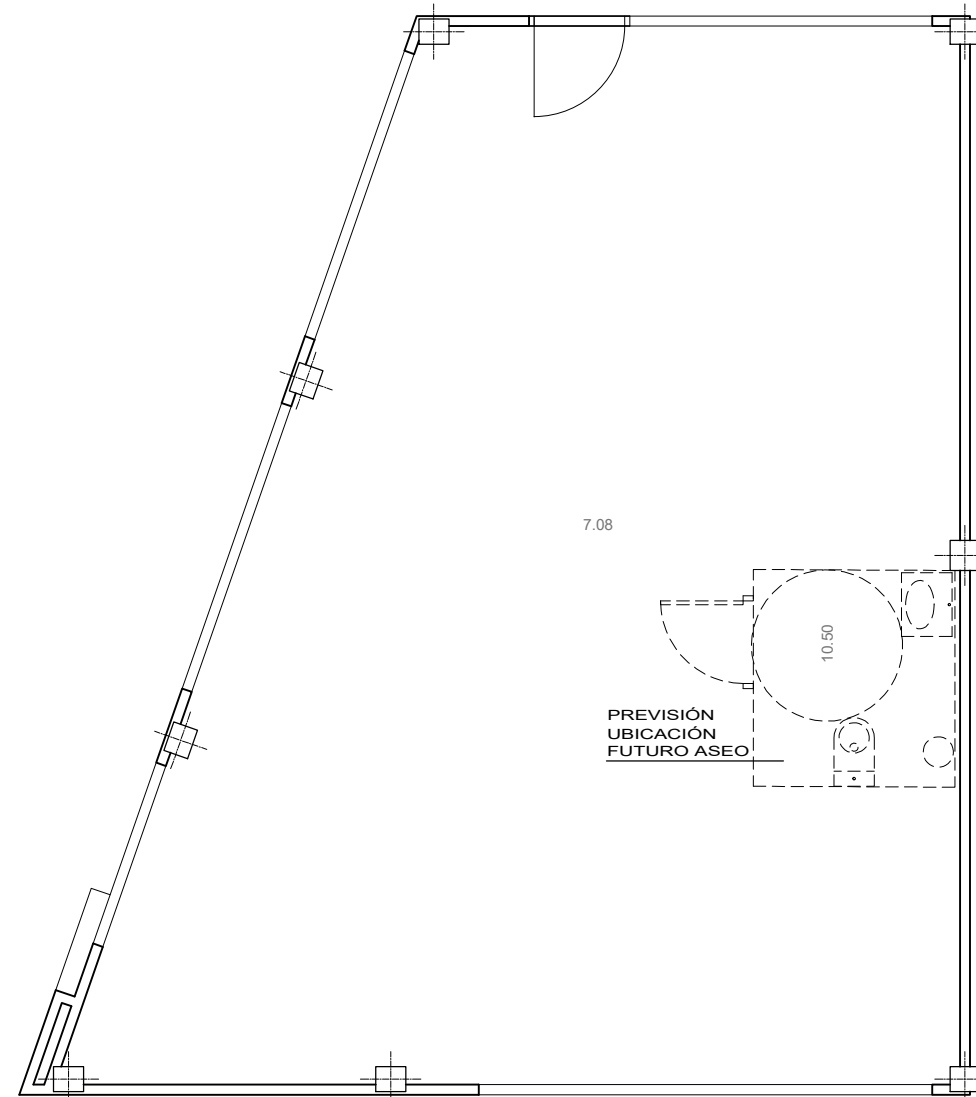
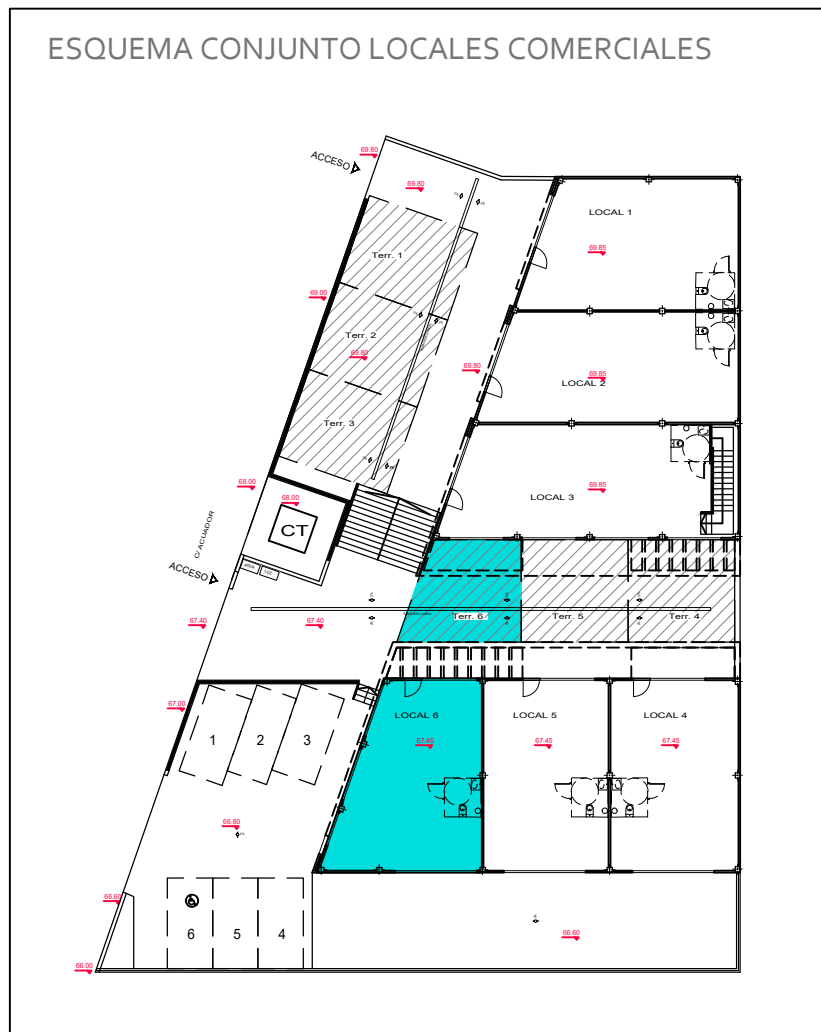
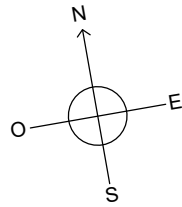
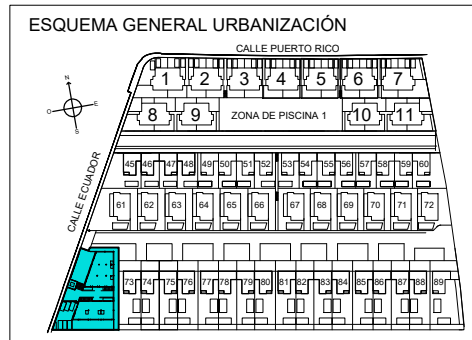
LOCAL 5
SUPERFICIES

| | |
|------------------------------|----------------------|
| SUP. CONSTRUIDA LOCAL | 74.90 m ² |
| TERRAZA DESCUBIERTA ASIGNADA | 33 m ² |



RESIDENCIAL CAMPANA BAY
LOCALES COMERCIALES

24-02-2023



LOCAL 6
SUPERFICIES

| | |
|------------------------------|----------------------|
| SUP. CONSTRUIDA LOCAL | 78.18 m ² |
| TERRAZA DESCUBIERTA ASIGNADA | 33 m ² |

